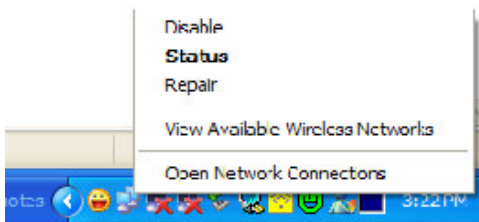


To get started, you would need to register & activate your WBA 'Home' Operator Roaming Facility. For more details, please contact your WBA 'Home' Operator.

This service is only available in WBA members' network hotspots. For hotspots details, please log on to your designated WBA 'Host' website for coverage areas.

### Step 1:

When in hotspots, Right-click the "Wireless Network" icon in the System Tray, and select "View Available Wireless Networks". It should pick up signal strength from all available networks in the area. Right-click the "Wireless Network" icon in the System Tray, and select "View Available Wireless Networks".

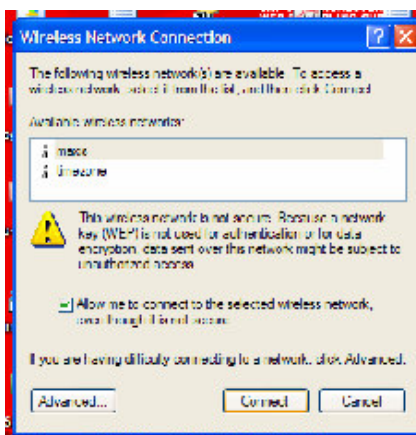


Picture 1: Wireless Network Bar

### Step 2:

You will need to select the SSID/Network Name to your WBA 'Host' Operator. Make sure the button for "**Allow me to connect to the selected wireless network, even though it is not secure**" is **CHECKED**.

*\*For NTT and Korea Telecom customers, this step may differ. Please check with your WBA 'Home' Operator for specific instructions.*



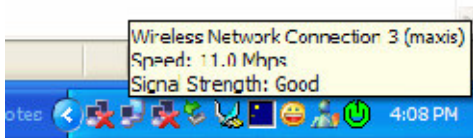
Picture 2: When roaming in Malaysia, select 'Maxis'

## WBA Roaming User Guide for Windows XP/2000

### Step 3:

Launch the Internet Browser and request for an URL in the address bar. (e.g. [www.yahoo.com](http://www.yahoo.com)).

*\*Note: If your homepage is set to an intranet address, this will not work.*



Picture 3: Make sure your Wireless Network detects your WBA 'Host' member coverage signal.

### Step 4:

Your WBA 'Host' Operator Login page will appear. You will need to look under the WBA logo, and select your WBA 'Home' Operator.



Picture 4: If your WBA 'Home' member is Starhub (Singapore), select Starhub.

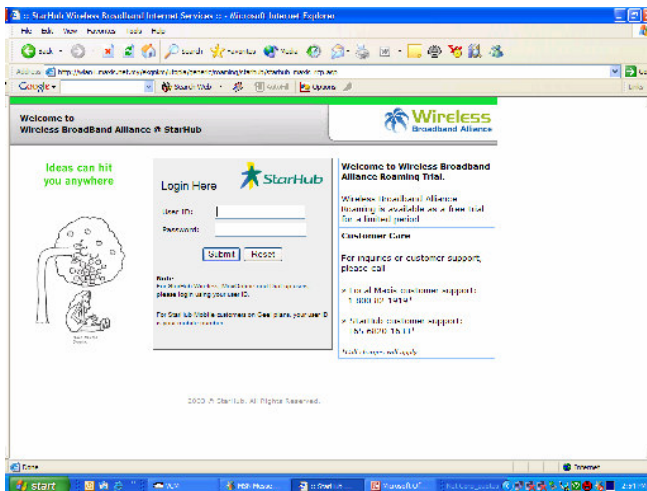
### Step 5:

The users Terms & Conditions page will appear. You will need to accept the terms & conditions before proceeding.

## WBA Roaming User Guide for Windows XP/2000

### Step 6:

Your WBA 'Home' Operator Login page will appear. Key in your username and password and you will be connected.



Picture 5: Key in your Starhub Username and Password if you are a Starhub customer.

### Step 7:

Upon successful authentication, you will be connected to the Internet.

### Step 8:

To end your internet session, look for the logout button (if available) or type 'logout.' at the URL bar.

*\*Different WBA 'Host' Operator may offer different logout feature. Please check available logout feature when you are signed on in the WBA 'Host' Operator hotspots.*



Picture 6: Logout via this 'Pop up' screen if you are in Maxis UTOPIA Hotspot.

**Note : Make sure WEP KEY is disabled before trying to connect to any WBA operator network. (This is not applicable for NTT Hotspots)**